



NetComm

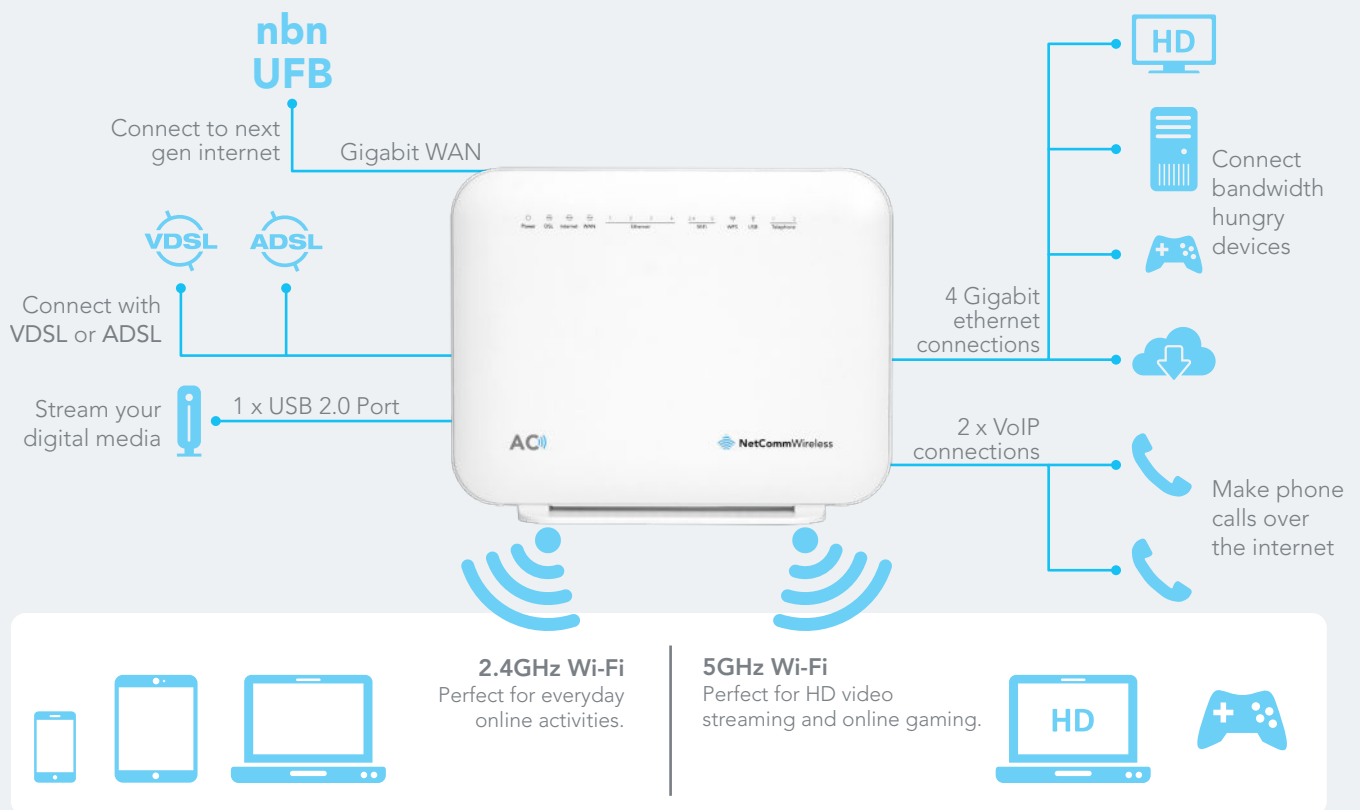


**Enhanced VDSL2/ADSL2+ Dual Band AC1600
Wireless Gigabit Gateway with VoIP**
NF18ACV

The **digital heart** of the home.

Bring an enhanced broadband experience to the home with the superfast NetComm NF18ACV smart residential VDSL2/ADSL+ wireless gateway.

Interfaces



PERFECT FOR

- Ultra-fast connection to your fixed line VDSL2/ADSL2+ service
- High-speed connection to nbn or UFB Fibre networks FTTN/FTTB and FTTH/FTTP
- Triple play services offer including Voice over IP
- Creating a powerful wireless home network and media sharing

KEY FEATURES

- Fully featured VDSL2 / ADSL2+ gateway
- 4 x Gigabit Ethernet 10/100/1000 LAN ports
- nbn and UFB ready – ultra-fast connection to nbn and UFB fibre network - 1 x 10/100/1000 Gigabit Ethernet WAN port
- VoIP feature for HD quality voice calls - connect up to 2 telephones
- Next generation Wi-Fi 802.11 AC1600, dual band concurrent, for multiple high-speed wireless connections
- 2x WPS push buttons for the quick and easy connection of wireless devices on both 2.4GHz and 5GHz bands
- Access and share media and file content across the wireless home network
- Device performance monitoring and management through TR-069
- Intuitive user interface for a streamlined configuration and management experience

Key features



nbn and UFB ready

Featuring VDSL2/ADSL2 technologies as well as a Gigabit WAN port, the NF18ACV is a 3-in-1 gateway that provides access to **ADSL** networks, **VDSL** and all **nbn** and **UFB** fibre network options: **FTTN**, **FTTB**, **FTTH**.



Triple play services

The NF18ACV is a triple play services enabler that supports the transmission of high-speed data, multi HD/UHD IPTV and over the top video streaming, VoIP feature for HD quality voice calls with the capacity to connect 2 phones.



Enhanced wireless experience

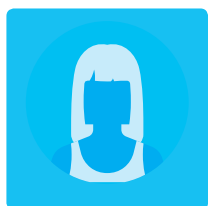
The NF18ACV gateway embeds the newest generation of Wi-Fi (802.11 AC) for powerful access point and video grade wireless capabilities. It allows both **2.4GHz** and **5GHz** bands to work concurrently, ensuring interoperability with all wireless equipment in the house.

The NF18ACV is equipped with 3 x 3 MIMO internal antennas to provide optimum reception while offering a powerful signal throughout the home. Create an ultra-fast **1600 Mbps¹ Wi-Fi** home network and connect a multitude of wireless devices such as smart TVs, set top boxes, laptops, tablets, computers, NAS, smart phones and gaming consoles with upgraded coverage and performance.



Media Sharing

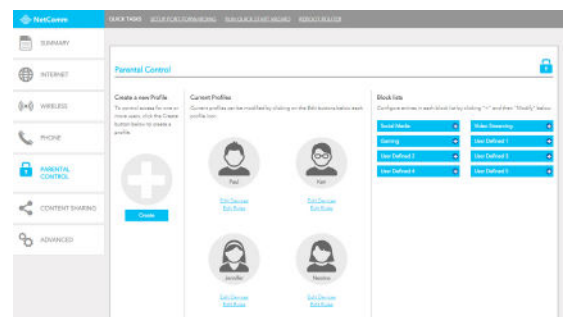
Connect a **USB device** to the NF18ACV gateway, access and share all A/V media and file content with all of the connected devices in the house in real time. The NF18ACV becomes the media hub of the house using **DLNA/UPnP** standard and enhanced wireless capabilities to create a reliable high-speed home network.



Intuitive user experience

NetComm's user interface offers effortless navigation and greater visibility into the home network for an improved customer experience including features such as:

- A map of **connected devices** offering a simplified view of the home network. Helping end users to identify connection issues faster and reduce the number and duration of calls to customer service
- **Parental control** for effortless content and time management including scheduling, providing parents with control and ease of mind
- A **Quick Start Wizard** providing a quick and easy first time setup experience, and
- A **responsive user interface design** which adapts to any device screen used to configure the platform



Technical Specifications

PACKAGE INCLUDES

- NetComm Wireless VDSL2/ADSL2+ Dual Band AC1600 Wireless Gigabit Gateway with VoIP
- Power Adapter
- Printed Quick Start Guide
- Ethernet Cable (1.5m, RJ45)
- Phone Cable (1.5m, RJ11)
- Wireless Security Card
- Warranty Card

ENVIRONMENTAL AND PHYSICAL

- Operating temperature: 0-40°C, Humidity: 10%-95% non-condensing
- Storage temperature: -10-60°C, Humidity: 5%-95% non-condensing
- DC Input Voltage: 12V/2A
- Dimensions: 216 (w) x 174 (h) x 28 (d) mm
- Weight: 558 grams

DEVICE INTERFACE

- 1 x RJ45 10/100/1000Mbps WAN port
- 1 x ADSL / VDSL port
- 4 x RJ45 10/100/1000Mbps LAN ports
- 2 x RJ11 Phone ports (VoIP)
- 1 x Reset button
- 2 x WPS buttons (2.4GHz and 5GHz)
- 1 x Power jack
- 1 x Power switch
- LED (Power/DSL/Internet/WAN/LAN1-4 /2.4GHz/5GHz/WPS/USB1-2/ Phone1-2)

VDSL:

- PPPoE/PPPoA/IPoA/ Static IP/Dynamic IP/Bridge
- ITU-T G.993.2 VDSL2
- Supports 8a,8b,12a,12b,17a profile
- Supports ATM and PTM
- Supports G.INP

ADSL2+:

- PPPoE/PPPoA/IPoA/Static IP/Dynamic IP/Bridge
- ITU G.992.1 (G.dmt)
- ITU G.992.2 (G.lite)
- ITU G.992.3
- ITU G.992.3 (Annex J)
- ITU G.992.3 (Annex L)
- ITU G.992.5
- ITU G.992.5 (Annex M)
- Supports multiple PVCs

ETHERNET WAN

- PPPoE, DHCP client, Static IP

WIRELESS

- Compatible with IEEE 802.11b, IEEE 802.11g, IEEE 802.11n and IEEE 802.11ac
- Supports concurrent dual band (2.4GHz/5GHz) wireless
- SSID broadcast or in stealth mode
- Auto/Manual Channel selection
- WEP/WPA/WPA-PSK/WPA2/WPA2-PSK
- WPS button (Wi-Fi Protected Setup)

ANTENNAS

- 3x3 Internal antennas (802.11ac)
- 2x2 Internal antennas (802.11n)

VoIP PROTOCOL

- SIP2.0
- G.711, G.723 and G.726
- FAX T.38 FAX Relay

MEDIA

- File sharing
- DLNA

SECURITY

- Firewall
- MAC filtering

ROUTING

- Static Route
- Dynamic Route (RIP v1/v2)
- DMZ
- Supports Layer 2 Bridge Mode

ADMINISTRATION

- QoS
- SNMP
- UPnP
- Syslog
- Web-based UI
- Remote Login
- TR-069 Auto provisioning
- Backup/Restore Settings

COMPLIANCE

- RCM, NZ Telepermit

1. Maximum wireless signal rate and coverage values are derived from IEEE Standard 802.11 n and 802.11ac specifications. Actual wireless speed and coverage are dependent on network and environmental conditions included but not limited to volume of network traffic, building materials and construction/layout.