

TSW200



TSW200 360° VIEW

PoE+ GIGABIT ETHERNET SWITCH

// TSW200 is industrial unmanaged switch from Teltonika Networks.

// TSW200 is equipped with 2 SFP ports for long-range Fiber-optic communication and 8 Gigabit Ethernet ports which support IEEE802.3af and IEEE802.3at Power-over-Ethernet standards.

// Classified as power source equipment (PSE), it enables centralization of the power supply, providing up to 30 watts per port and reducing the effort for installing power. It has 10/100/1000 Mbps Ethernet ports to provide an economical high-bandwidth solution for your industrial Ethernet network.

// This rugged unmanaged industrial switch is ideal for professional high bandwidth applications where it is necessary to provide both: reliable data connection and power supply.



SFP

2 x SFP ports for long-range Fiber-optic communication

PoE+

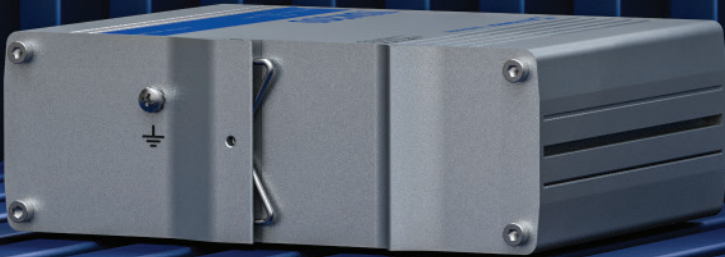
8 x PoE ports with 802.af, 802.3at standard support

POWER BUDGET

Total power budget at PSE up to 240 W

ETHERNET

8 x Gigabit Ethernet with speeds up to 1000 Mbps



KEY FEATURES

HARDWARE

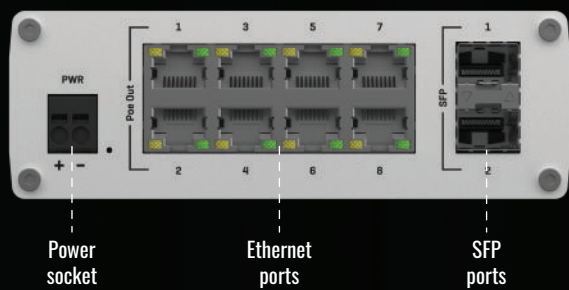
| | |
|-----------------------------|--|
| Powering option | 2 pin, push-in, terminal block |
| Input voltage range | 7-57 VDC |
| Input voltage range for PoE | 44-57 VDC |
| Power consumption | Idle: < 2 W, Max: < 9 W (no PoE device connected) |
| PoE standard | 802.3af/at (up to 30 W per port, total power budget - 240 W) |
| Ethernet | 8 x 10/100/1000 Mbps Ethernet ports |
| SFP | 2 x SFP port for Optical interface |
| Status LEDs | 16 x Ethernet, 1 x Power, 2 x SFP activity |
| Ingress protection rating | IP30 |
| Operating temperature | -40 °C to 75 °C |
| Housing | Aluminium housing with wall or DIN rail mounting option and grounding capability |
| Dimensions | 132 x 44.2 x 95.1 mm |
| Weigh | 456 g |
| Installation | Desktop, wall or DIN Rail mountable (additional kit needed) |

*PoE operates properly only when connected power supply outputs 44 V or higher voltage

PERFORMANCE SPECIFICATIONS

| | |
|------------------------------------|------------|
| Bandwidth | 20 Gbps |
| Packet buffer | 128 KB |
| Jumbo frame support | 9216 bytes |
| MAC address table size | 2K entries |
| Auto MDI/ MDI-X Cable Detection | Yes |

FRONT VIEW



BACK VIEW

