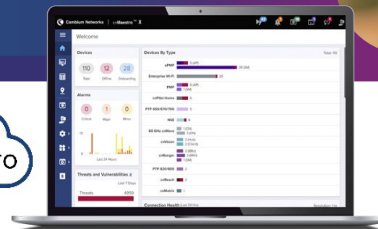


XV2-2T0 Wi-Fi 6 Outdoor Access Point

802.11ax Dual-Radio, 2x2

XV2-2T0 Quick Look:

- Dual-radio 802.11ax
- 2.5 GbE uplink Ethernet
- 1 GbE with power out
- Outdoor IP67 rated, -40°C to 65°C
- High-efficiency omni antenna



Outdoor Wi-Fi 6 Designed for Greater Range and Speed

The XV2-2T0 is a dual radio Wi-Fi 6 access point (AP) designed for outdoor deployments in Wi-Fi hotspots, outdoor enterprise networks, hospitality, and education markets. The XV2-2T0 features surge suppression up to 4kV and an LTE co-existence filter.

The XV2-2T0 delivers Cambium 30VDC power out, or 48VDC for PoE devices connected to the second gigabit Ethernet port. Ideal for connecting this AP to a Cambium Networks' subscriber module (SM), cnWave™ 60 GHz Connection Node, or any IP and Ethernet device, such as a security IP camera or another Wi-Fi access point.

The new IEEE 802.11ax standard delivers higher network speeds and enables more connected devices at higher packet quality. In outdoor deployments, the IEEE 802.11ax standard delivers greater range by boosting the RF frame preamble by 3dB and improved signal quality with increased guard interval vs previous Wi-Fi technology. The XV2-2T0 is fully backward compatible with existing Wi-Fi technology and prepares a network for higher growth and greater density of Wi-Fi-connected devices.

Cloud or On-premises Management

The XV2-2T0 is supported by Cambium Networks' ONE Network enterprise architecture managed by the cnMaestro™ Network Management System. cnMaestro uses a distributed intelligence architecture with cloud-first management and edge-intelligent Wi-Fi that self-optimizes for the RF environment. cnMaestro delivers a single-pane-of-glass management experience for enterprise Wi-Fi APs, cnMatrix™ Ethernet Switches, NSE Service Edge, residential service provider routers, Cambium's fixed wireless access solutions, and Cambium Fiber.

XV2-2T0 Wi-Fi 6 Outdoor Access Point

Specifications

| | | | |
|--|--|--------------------------------------|---|
| Radios | 5 GHz 802.11 a/n/ac/ax, 2x2 2.4 GHz 802.11 b/g/n/ax, 2x2 BLE 4.1 | Power | Max power 20W, 802.3at powered device Up to 50W when powering an auxiliary device |
| Wi-Fi | 802.11 a/b/g/n/ac/ax | Dimensions | 582 mm x 200 mm x 80 mm (22.91 in x 7.87 in x 3.15 in) |
| SSID Security | WPA3-SAE, WPA3-Enterprise, WPA2-PSK (CCMP, AES, 802.11i), WPA2 Enterprise (802.1x/EAP), OSEN, OWE, Open | Weight | 2,700 g (5.95 lb) |
| Ports | 1 x IEEE 100/1000/2500 Mbps 1 x IEEE 10/100/1000 Mbps Ethernet with SW configurable passive PoE output of 30V or 48V up to 30 watts | Security | Kensington lock slot |
| Antenna Gain | 5 GHz 9.3 dBi, omni 2.4 GHz 5.3 dBi, omni | Mount Options | Pole or wall mounting Pole diameter: Min 30 mm/max 75 mm |
| Max EIRP* | 5 GHz 36 dBm 2.4 GHz 33 dBm | Ambient Operation Temperature | 40°C to 65°C (-40°F to 149°F) |
| Filter LTE Band | 38, 40 | Storage Temperature | -40°C to 70°C (-40°F to 158°F) |
| FCC Ch 1–11, 36–48, 52–64, 100–144, 149–165 | | Humidity | 95% RH non-condensing |
| ISED Ch 1–11, 36–48, 52–64, 100–116, 149–165 | | MTBF | 669,174 hours at 25°C 206,739 hours at 65°C |
| ETSI* Ch 1–13, 36–64, 52–64, 100–140, 149–173 | | LEDs | Multi-color status LEDs, dimmable, on/off |
| ROW* Ch 1–14, 36–48, 52–64, 100–144, 149–177 | | Certifications (compliance) | Wi-Fi Alliance 802.11 a/b/g/n/ac/ax, FCC, IC, CE, EN 60601-1-2, EN 60950-1, IEC 62368-1 Safety, EN 60601-1-2 Medical, EN 61000-4-2/3/5 Immunity, EN 50121-1 Railway EMC, EN 50121-4 Railway Immunity, IEC 61373 Railway Shock & Vibration, EN 62311 Human Safety/RF Exposure, WEEE & RoHS |

*Individual country limits may apply.

Standards

| | |
|------------------------|--|
| Wi-Fi Protocols | VHT MCS rates, 16/64/256/1024-QAM, channel width support in 5 GHz: 20/40/80 MHz |
| | TWT, Long OFDM Symbol, transmit beamforming, Airtime Fairness, AMSDU, AMPDU, RIFS, STBC, LDPC, MIMO Power Save, MRC, BPSK, QPSK, CCK, DSSS, OFDM, OFDMA, UL/DL MU-MIMO |
| | IEEE 802.11 a/ac/ax/b/d/e/g/h/i/k/n/r/u/v/w |

XV2-2T0 Wi-Fi 6 Access Point

Network Specifications

| | | | |
|---|---|---------------------------------------|---|
| Operational Modes | Controllerless standalone Cloud-managed cnMaestro, VM | RF Management | Multi-modal RF optimization supporting Auto-RF for dynamic channel selection and dynamic power adjustment configured via cnMaestro, performed in the intelligent edge AP RF monitor with channel utilization/packet error rate/interference. |
| WLAN | 1,024 concurrent clients per AP 16 SSID per AP | Band Steering | Yes |
| Security, Authentication Encryption | Open, WPA2-AES with PSK, ePSK and Enterprise WPA3 with PSK (WPA3-SAE), ePSK, Enterprise, Enterprise-CNSA, OWE (Enhanced Open) OSEN and PMF (802.11 W) MAC authentication with local database or external database using RADIUS protocol 802.1X with EAP-TTLS, EAP-TLS/MSCHAPv2, PEAPv0/PEAPv1/EAP-PEAP/EAP-SIM/AKA/FAST Hotspot WEB authentication | Mesh | Multi-hop, either band |
| Wi-Fi Quality of Service | WMM (packet marking either with 802.1p or IP DSCP), WMM-PS, U-APSD Multicast to unicast conversion | Scheduled WLAN | On/off by day, week, time of day |
| Service Availability | Critical network resource monitor with SSID shutdown | Data Limit | Client bitrate/time/throughput limit per SSID |
| Fast Roaming | 802.11k/r/v, OKC, cnMaestro-assisted roam | Network | LACP (802.3ad), TCP connection log, NAT logging firewall, DHCP server, DHCP Relay option 82, VLAN pooling, RADIUS attribute, VID VLAN per SSID per user, ePSK with VLAN assignment per PSK LLDP, IGMP v1, v2 |
| Guest Access/ Captive Portal Service (EasyPass)* | cnMaestro-hosted EasyPass portal Multiple authentication methods supported to onboard guest user: <ul style="list-style-type: none"> • Radius-based authentication • Click-through with simple terms and conditions acceptance • Social login using Google®, Facebook® • SMS-based authentication (X) • Voucher-based access • Microsoft® Azure AD and Google Workspace® (X) • Sponsored guest access (X) • Self-registration access (X) cnMaestro API support for external captive portal integration 802.11u, Hotspot 2.0 | Network Tools | Wired and wireless remote packet capture, logging, WAN speed test, ZapD, remote network connectivity tools |
| Accounting | RADIUS accounting, multiple AAA, CoA, DM | Tunnel | L2TPv2, L2GRE, PPPoE |
| API | RESTful management and statistics API via cnMaestro X, presence location push APIs | IP | IPv4, IPv6 |
| | | VLAN | 802.11Q, max 4096 |
| | | Management Interfaces Security | HTTP/HTTPS web interface, SSH, Telnet Rogue AP detection and termination (X), WIDs/WIPs, DoS protection L2–L7 firewall with application visibility (X) and control (X), DNS-based access control (X) ACL and AirCleaner tools |
| | | Services | Wi-Fi Calling control, NTP, Syslog, DNS proxy, SNMP traps, SNMPv1, SNMPv2c, SNMPv3, TCP and DNS logging |

*X features available in cnMaestro X.

XV2-2T0 Wi-Fi 6 Access Point

Management



cnMaestro uses a distributed intelligence architecture with cloud-first management and edge-intelligent APs that self-optimize for the RF environment. cnMaestro delivers a single pane-of-glass management for Cambium broadband fixed wireless, cnMatrix Ethernet Switches, enterprise-grade Wi-Fi APs, NSE Service Edge, and residential service provider routers.

cnMaestro can be deployed on cloud or on-premises via a virtual machine.

To serve a growing market for advanced management and services functionality, Cambium Networks offers cnMaestro in two management tiers:

cnMaestro X

Paid subscription that includes:

- Advanced device management capabilities
- Deep packet inspection (DPI) application visibility and Control for 2,400+ apps
- RESTful management and statistics API
- Presence location push APIs
- Graphic reports
- Webhooks
- Cambium Care Pro for 24x7 technical support
- Accelerated access to L2 engineers and regular software updates

Assists

- Assesses the network's configuration and identifies weak security settings and proposes a fix to ensure the network configuration is up to the top security industry standards

cnMaestro Essentials

License-free cloud management that delivers a disruptive total cost of ownership (TCO) for organizations of all sizes. Includes EasyPass for OneClick or voucher-based connection as well as WiFi4EU access.

X Assurance

- Helps to quickly identify network-wide connectivity issues by isolating every element of the client's lifecycle, either radio or network related
- Gives an overview quality index of the network and highlights each element's contribution to easily identify the worst offender
- Provides insight of probable causes and proposes fixes for the administrator to apply
- Provides individual client connectivity visibility throughout the entire lifecycle of its connection to easily identify each connection's result and highlight the failure reason, should there be any

EasyPass Portal with Additional Options

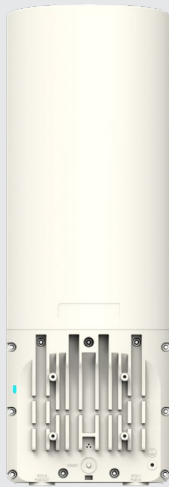
- Self-registration: Form-based access
- Sponsored guest: Guest ambassador-based access
- Paid access: Monetize the Wi-Fi access
- Microsoft Azure: Corporate user login
- Google Login: Web login using Google accounts

**Find out more about
cnMaestro**

XV2-2T0 Wi-Fi 6 Access Point



Front



Back Panel



Bottom

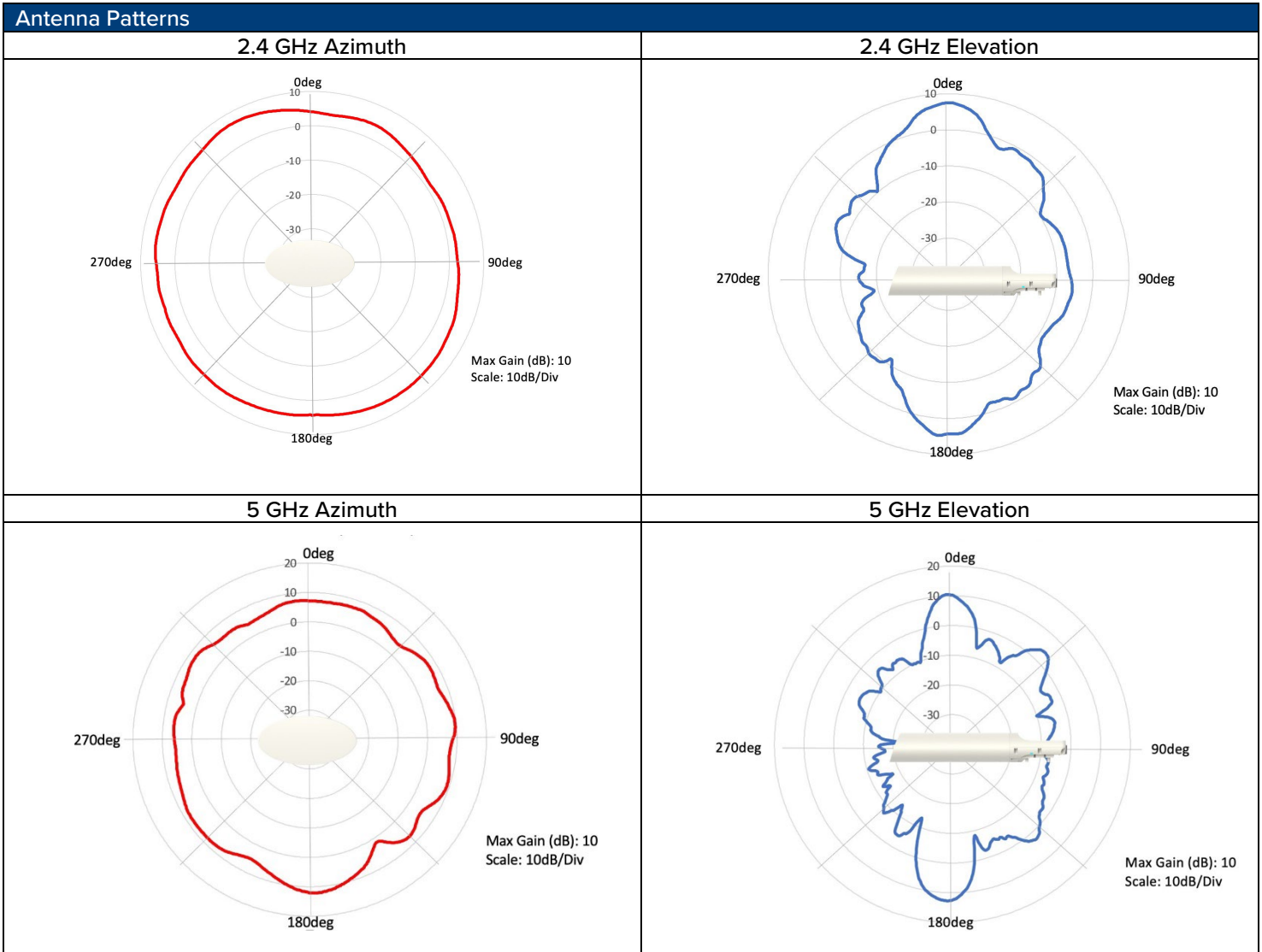


Side



Front Oblique

XV2-2T0 Wi-Fi 6 Access Point



XV2-2T0 Wi-Fi 6 Access Point

XV2-2T0 Ordering Information

| | |
|-------------------------|---|
| Regulatory Model | REG-XV2-2T0 |
| XV2-2T0XA00-US | XV2-2T0 Dual-Radio Wi-Fi 6. Outdoor (FCC) 802.11ax 2x2, Omni, US |
| XV2-2T0XA00-CA | XV2-2T0 Dual-Radio Wi-Fi 6. Outdoor (IC) 802.11ax 2x2, Omni, CA |
| XV2-2T0XA00-EU | XV2-2T0 Dual-Radio Wi-Fi 6. Outdoor (ETSI) 802.11ax 2x2, Omni, EU |
| XV2-2T0XA00-RW | XV2-2T0 Dual-Radio Wi-Fi 6. Outdoor 802.11ax 2x2, Omni, RW |
| C000000L141A | PoE, 60W, 56V, 10GbE DC Injector, Indoor, Energy Level 6 Supply, accepts C5 connector |
| N000000L034B | PoE injector, 30.5W, 56V, 5GbE DC Injector, Indoor, Energy Level 6 Supply, accepts C5 connector |
| N000900L031A | AC line cord, US Type B, 720mm, C5 connector |
| N000900L032A | AC line cord, EU Type F angled, 720mm, C5 connector |
| N000900L033A | AC line cord, UK Type G angled, 720mm, C5 connector |
| N000900L034A | AC line cord, BR Type N, 720mm, C5 connector |
| N000900L011A | AC line cord, AU Type I, 720mm, C5 connector |
| N000900L012A | AC line cord, IN Type D angled, 720mm, C5 connector |
| N000900L013A | AC line cord, AR Type I, 720mm, C5 connector |
| N000900L015A | AC line cord, CN Type I, 720mm, C5 connector |
| N000900L048A | AC line cord, ZA Type M angled, 720mm, C5 connector |

cnMaestro X Subscriptions

| | |
|--------------------------|--|
| MSX-SUB-XV2-2T0-1 | cnMaestro X 1-year subscription for one XV2-2T0 AP. Creates one Device Tier3 slot. Includes Cambium Care Pro support. Order CCADV-UPG-XV2-2T0-1 for NBD advanced replacement hardware support. |
| MSX-SUB-XV2-2T0-3 | cnMaestro X 3-year subscription for one XV2-2T0 AP. Creates one Device Tier3 slot. Includes Cambium Care Pro support. Order CCADV-UPG-XV2-2T0-3 for NBD advanced replacement hardware support. |
| MSX-SUB-XV2-2T0-5 | cnMaestro X 5-year subscription for one XV2-2T0 AP. Creates one Device Tier3 slot. Includes Cambium Care Pro support. Order CCADV-UPG-XV2-2T0-5 for NBD advanced replacement hardware support. |

Cambium Care Support

| | |
|---------------------------|---|
| CCADV-SUP-XV2-2T-1 | Cambium Care Advanced, 1-year support for one XV2-2T0 Wi-Fi 6 AP. 24x7 TAC support, SW updates, and NBD advance replacement for HW |
| CCADV-SUP-XV2-2T-3 | Cambium Care Advanced, 3-year support for one XV2-2T0 Wi-Fi 6 AP. 24x7 TAC support, SW updates, and NBD advance replacement for HW |
| CCADV-SUP-XV2-2T-5 | Cambium Care Advanced, 5-year support for one XV2-2T0 Wi-Fi 6 AP. 24x7 TAC support, SW updates, and NBD advance replacement for HW |
| CCADV-UPG-XV2-2T-1 | Cambium Care Advanced Add-on to cnMaestro X, 1-year support for one XV2-2T. 24x7 TAC support, SW updates, and NBDS advance replacement for HW |
| CCADV-UPG-XV2-2T-3 | Cambium Care Advanced Add-on to cnMaestro X, 3-year support for one XV2-2T. 24x7 TAC support, SW updates, and NBDS advance replacement for HW |
| CCADV-UPG-XV2-2T-5 | Cambium Care Advanced Add-on to cnMaestro X, 5-year support for one XV2-2T. 24x7 TAC support, SW updates, and NBDS advance replacement for HW |
| CCPRO-SUP-XV2-2T-1 | Cambium Care Pro, 1-year support for one XV2-2T0 Wi-Fi 6 AP. 24x7 TAC support and SW updates |
| CCPRO-SUP-XV2-2T-3 | Cambium Care Pro, 3-year support for one XV2-2T0 Wi-Fi 6 AP. 24x7 TAC support and SW updates |
| CCPRO-SUP-XV2-2T-5 | Cambium Care Pro, 5-year support for one XV2-2T0 Wi-Fi 6 AP. 24x7 TAC support and SW updates |

XV2-2T0 Wi-Fi 6 Access Point

LIMITED WARRANTY

Cambium Networks XV2-2T0 Wi-Fi 6 Access Point includes a 3-year hardware warranty.

ABOUT CAMBIUM NETWORKS

Cambium Networks enables service providers, enterprises, industrial organizations, and governments to deliver exceptional digital experiences and device connectivity with compelling economics. Our ONE Network platform simplifies management of Cambium Networks' wired and wireless broadband and network edge technologies. Our customers can focus more resources on managing their business rather than the network. We make connectivity that just works.

cambiumnetworks.com

10212024