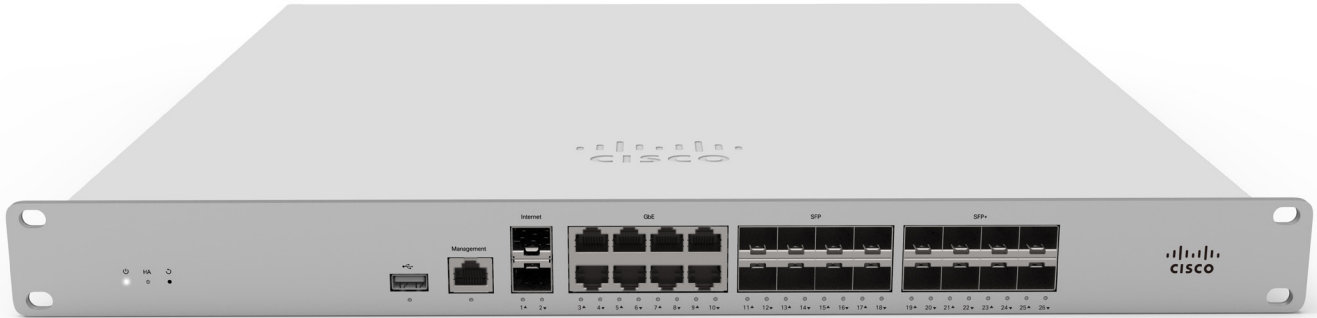


# Meraki MX

## Cloud Managed Security & SD-WAN



### Overview

Cisco Meraki MX Security Appliances are ideal for organizations considering a Unified Threat Management (UTM) solution, for distributed sites, campuses or datacenter VPN concentration. Since the MX is 100% cloud managed, installation and remote management is simple. The MX has a comprehensive suite of network services, eliminating the need for multiple appliances. These services include SD-WAN capabilities, application-based firewalling, content filtering, web search filtering, SNORT® based intrusion detection and prevention, Cisco Advanced Malware Protection (AMP), web caching, 4G cellular failover and more. Auto VPN and SD-WAN features are available on our hardware and virtual appliances, configurable in Amazon Web Services.

### FEATURE-RICH UNIFIED THREAT MANAGEMENT (UTM) CAPABILITIES

- Application-aware traffic control: bandwidth policies for Layer 7 application types (e.g., block YouTube, prioritize Skype, throttle BitTorrent).
- Content filtering: CIPA-compliant content filter, safe-search enforcement (Google/Bing), and YouTube for Schools.
- Intrusion prevention: PCI-compliant IPS sensor using industry-leading SNORT® signature database from Cisco Sourcefire.
- Advanced Malware Protection: flow-based protection engine powered by Cisco AMP.
- Identity-based security policies and application management.

### INDUSTRY-LEADING CLOUD MANAGEMENT

- Unified firewall, switching, wireless LAN, and mobile device management through an intuitive web-based dashboard.
- Template based settings scale easily from small deployments to tens of thousands of devices.
- Role-based administration, configurable email alerts for a variety of important events, and easily auditable change logs.
- Summary reports with user, device, and application usage details archived in the cloud.

### INTELLIGENT SITE-TO-SITE VPN WITH MERAKI SD-WAN

- Auto VPN: automatic VPN route generation using IKE/IPsec setup. Runs on physical MX appliances and as a virtual instance within the Amazon AWS cloud services.
- SD-WAN with active / active VPN, policy-based-routing, dynamic VPN path selection and support for application-layer performance profiles to ensure prioritization of the applications types that matter
- Interoperates with all IPsec VPN devices and services.
- Automated MPLS to VPN failover within seconds of a connection failure
- Client VPN: L2TP IPsec support for native Windows, Mac OS X, iPad and Android clients with no per-user licensing fees.

### BRANCH GATEWAY SERVICES

- Built-in DHCP, NAT, QoS, and VLAN management services.
- Web caching: accelerates frequently accessed content.
- Load balancing: combines multiple WAN links into a single high-speed interface, with policies for QoS, traffic shaping, and failover.
- Smart connection monitoring: automatic detection of layer 2 and layer 3 outages and fast failover, including 3G/4G USB modems.

## INSIDE THE CISCO MERAKI MX

MX450 shown, features vary by model

### Redundant Power

Reliable, energy efficient design with field replaceable power supplies

### Modular Fans

High-performance front-to-back cooling with field replaceable fans

### Cryptographic Acceleration

Reduced load with hardware crypto assist

### Additional Memory

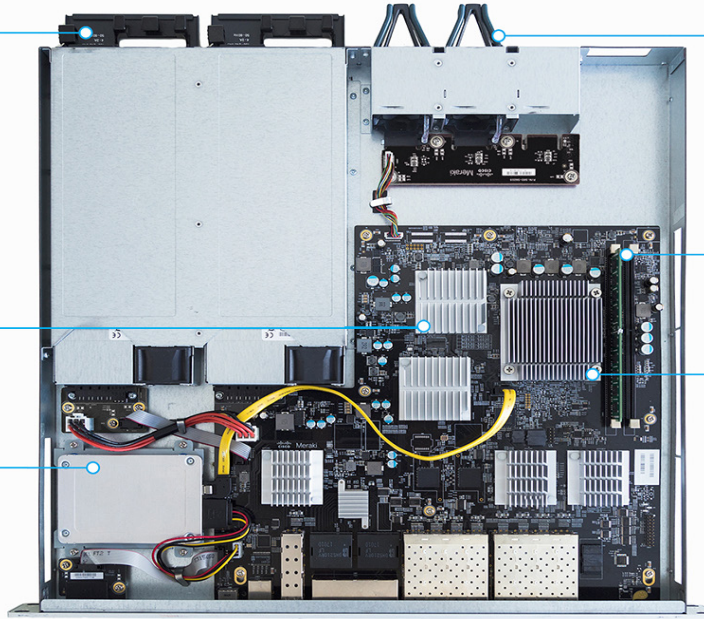
For high-performance content filtering

### Web Caching

128G SSD disk

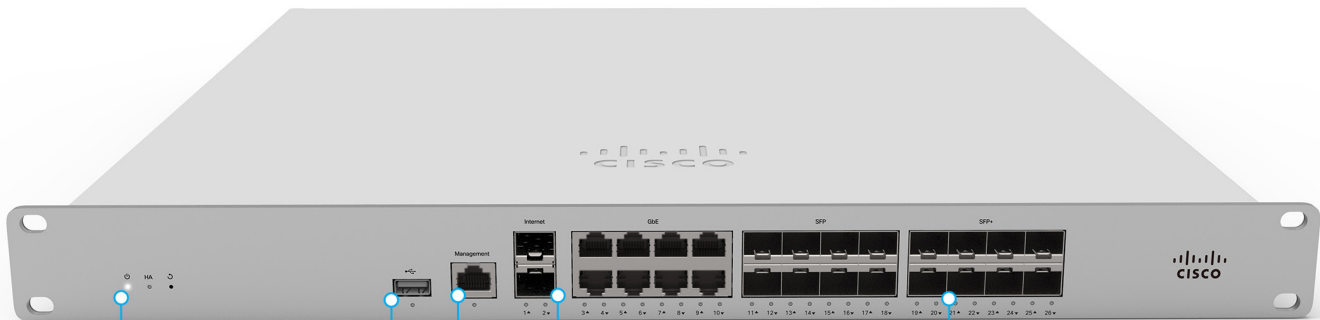
### Enhanced CPU

Layer 3-7 firewall and traffic shaping



## FRONT OF THE CISCO MERAKI MX

MX450 shown, features vary by model



**Multicolor Status LED**  
Monitor device status

**3G/4G Modem Support**  
Automatic cellular failover

**Management Interface**  
Local device access

**Dual 10G WAN Interfaces**  
Load balancing and SD-WAN

**1G/10G Ethernet/SFP+ Interfaces**  
10G SFP+ interfaces for high-speed LAN connectivity

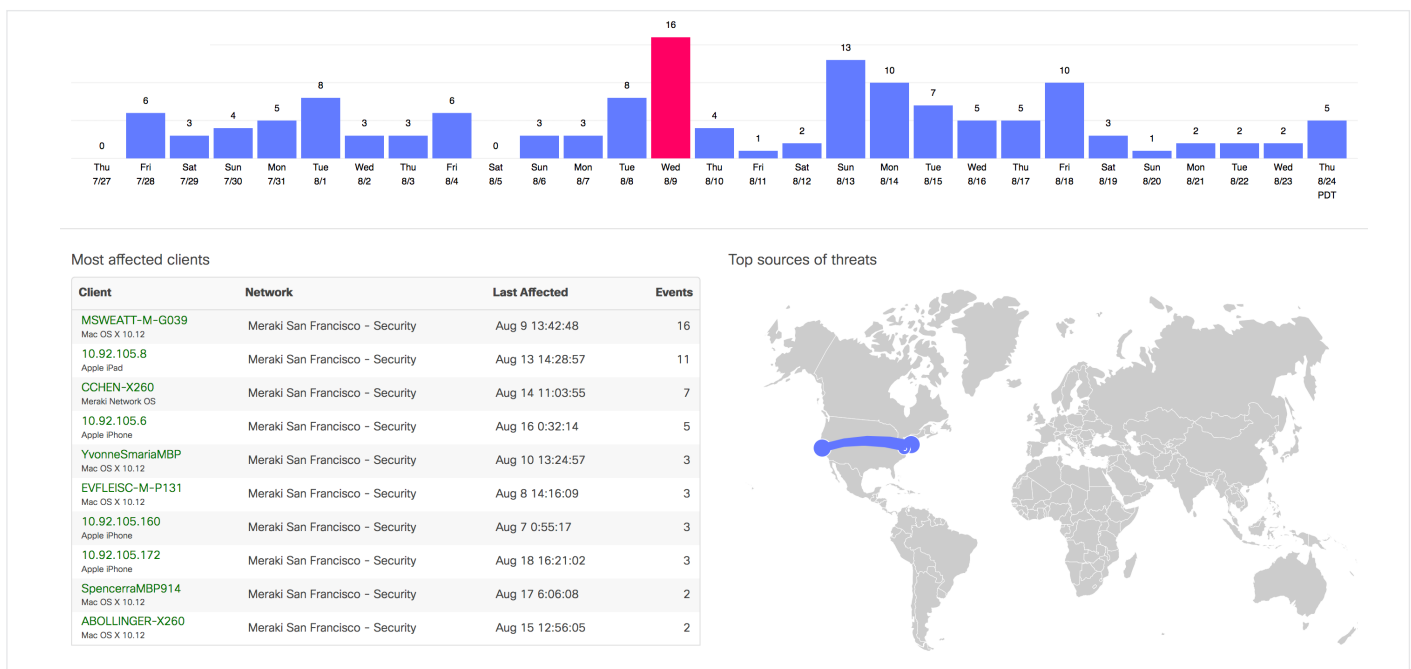
# Ironclad Security

The MX platform has an extensive suite of security features including IDS/IPS, content filtering, web search filtering, anti-malware, geo-IP based firewalling, IPsec VPN connectivity and Cisco Advanced Malware Protection, while providing the performance required for modern, bandwidth-intensive networks.

Layer 7 fingerprinting technology lets administrators identify unwanted content and applications and prevent recreational apps like BitTorrent from wasting precious bandwidth.

The integrated Cisco SNORT® engine delivers superior intrusion prevention coverage, a key requirement for PCI 3.0 compliance. The MX also uses the Webroot BrightCloud® URL categorization database for CIPA / IWF compliant content-filtering, Cisco Advanced Malware Protection (AMP) engine for anti-malware, AMP Threat Grid Cloud, and MaxMind for geo-IP based security rules.

Best of all, these industry-leading Layer 7 security engines and signatures are always kept up-to-date via the cloud, simplifying network security management and providing peace of mind to IT administrators.



Organization Level Threat Assessment with Meraki Security Center

**Group policies > Students**

Name:

Bandwidth:  unlimited [details](#)

Firewall and traffic shaping:

#	Policy	Protocol	Source	Src port	Destination	Dst port	Comment	Actions
1	Allow	Any	Any	Any	Any	Any	Default rule	

[Add a firewall rule](#)

#	Policy	Application	Actions
1	Deny	Peer-to-peer (P2P)	BitTorrent
2	Deny	Online backup	All Online backup

[Add a layer 7 firewall rule](#)

Identity Based Policy Management

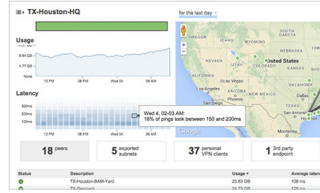
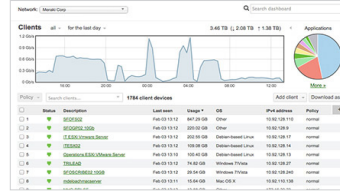
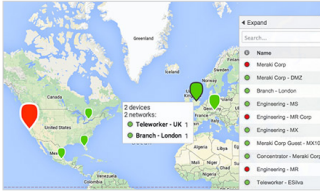
Malicious | 95 Threat score | 10 Behavioral indicators

analyzed  
URL: http://198.19.7.11/malware  
/8d9a8baf7d10c4022380a912c25842266e9f65d01368bde04dea105e8c2a43f

Cisco Threat Grid Cloud for Malicious File Sandboxing

# SD-WAN Made Simple

Software-defined WAN is a new approach to network connectivity that lowers operational costs and improves resource usage for multisite deployments to use bandwidth more efficiently. This allows service providers to offer their customers the highest possible level of performance for critical applications without sacrificing security or data privacy.



## Transport independence

Apply bandwidth, routing, and security policies across a variety of mediums (MPLS, Internet, or 3G/4G LTE) with a single consistent, intuitive workflow

## Application optimization

Layer 7 traffic shaping and application prioritization optimize the traffic for mission-critical applications and user experience.

## Intelligent path control

Dynamic policy and performance based path selection with automatic load balancing for maximum network reliability and performance

## Secure connectivity

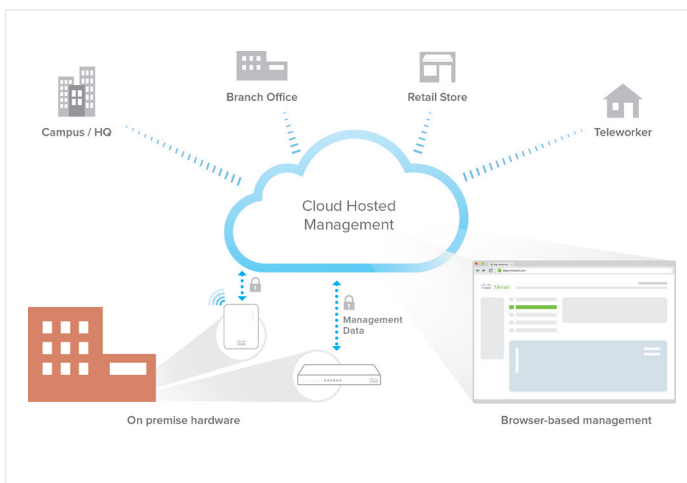
Integrated Cisco Security threat defense technologies for direct Internet access combined with IPsec VPN to ensure secure communication with cloud applications, remote offices, or datacenters

# Cloud Managed Architecture

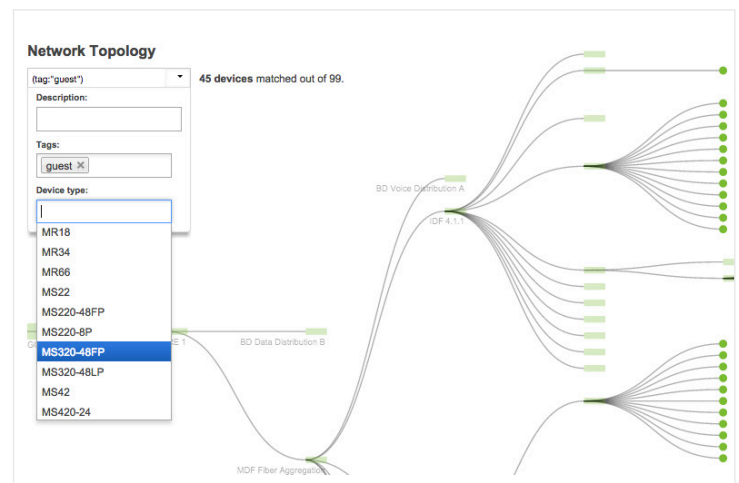
Built on Cisco Meraki's award-winning cloud architecture, the MX is the industry's only 100% cloud-managed solution for Unified Threat Management (UTM) and SD-WAN in a single appliance. MX appliances self-provision, automatically pulling policies and configuration settings from the cloud. Powerful remote management tools provide network-wide visibility and control, and enable administration without the need for on-site networking expertise.

Cloud services deliver seamless firmware and security signature updates, automatically establish site-to-site VPN tunnels, and provide 24x7 network monitoring. Moreover, the MX's intuitive browser-based management interface removes the need for expensive and time-consuming training.

For customers moving IT services to a public cloud service, Meraki offers a virtual MX for use in an Amazon Web Services, enabling Auto VPN peering and SD-WAN for dynamic path selection.



Cisco Meraki Cloud Management Architecture



End-to-End Network Visibility and Troubleshooting

## Integrated 802.11ac Wireless

The MX64W and MX65W integrate Cisco Meraki's award-winning wireless technology with the powerful MX network security features in a compact form factor ideal for branch offices or small enterprises.

- Dual-band 802.11n/ac, 2x2 MIMO with 2 spatial streams
- Unified management of network security and wireless
- Integrated enterprise security and guest access



MX65W Security Appliance

The MX65 and MX65W include two ports with 802.3at (PoE+). This built-in power capability removes the need for additional hardware to power critical branch devices.

- 2 x 802.3at (PoE+) ports capable of providing a total of 60W
- APs, phones, cameras, and other PoE enabled devices can be powered without the need for AC adapters, PoE converters, or unmanaged PoE switches.



MX65 Port Configuration





## Meraki vMX100

Virtual MX is a virtual instance of a Meraki security appliance, dedicated specifically to providing the simple configuration benefits of site-to-site Auto VPN for customers running or migrating IT services to the public cloud. A virtual MX is added via the Amazon Web Services marketplace and then configured in the Meraki dashboard, just like any other MX. It functions like a VPN concentrator.

- An Auto VPN to a virtual MX is like having a direct Ethernet connection to a private datacenter. The virtual MX can support up to 500 Mbps of VPN throughput, providing ample bandwidth for mission critical IT services hosted in the public cloud, like Active Directory, logging, or file and print services.
- Support for Amazon Web Services (AWS)
- No hardware, only a Meraki license is required



## Desktop and All-in-one Models







	MX64	MX64W	MX65	MX65W
				
<b>Recommended use cases</b>	Small branch	Small branch	Small branch	Small branch
<b>Recommended clients</b>	50	50	50	50
<b>Stateful Firewall Throughput</b>	250 Mbps	250 Mbps	250 Mbps	250 Mbps
<b>Advanced Security Throughput</b>	200 Mbps	200 Mbps	200 Mbps	200 Mbps
<b>Maximum VPN Throughput</b>	100 Mbps	100 Mbps	100 Mbps	100 Mbps
<b>Maximum concurrent VPN tunnels</b>	50	50	50	50
<b>WAN Interfaces</b>				
Dedicated	1 x GbE RJ45 1 x USB (cellular failover <sup>1</sup> )	1 x GbE RJ45 1 x USB (cellular failover <sup>1</sup> )	2 x GbE RJ45 1 x USB (cellular failover <sup>1</sup> )	2 x GbE RJ45 1 x USB (cellular failover <sup>1</sup> )
Dual-purpose <sup>2</sup>	1 x GbE RJ45	1 x GbE RJ45	-	-
<b>LAN Interfaces</b>				
Fixed	4 x GbE RJ45	4 x GbE RJ45	4 x GbE RJ45	4 x GbE RJ45
<b>Web Caching</b>	-	-	-	-
<b>Mounting</b>	Desktop or Wall mount	Desktop or Wall mount	Desktop or Wall mount	Desktop or Wall mount
<b>Dimensions</b> (w x d x h)	9.5" x 5.2" x 1" (239mm x 132mm x 25mm)	9.5" x 5.2" x 1" (239mm x 132mm x 25mm)	10.0" x 5.2" x 1" (256mm x 132mm x 25mm)	10.0" x 5.2" x 1" (256mm x 132mm x 25mm)
<b>Weight</b>	1.61 lb (0.7 kg)	3.04 lb (1.4 kg)	1.98 lb (0.9 kg)	3.37 lb (1.53 kg)
<b>Power Supply</b>	18W DC (included)	18W DC (included)	90W DC (included)	90W DC (included)
<b>Power Load</b> (idle/max)	4W / 10W	6W / 13W	6W / 72W	9W / 79W
<b>Operating Temperature</b>	32°F to 104°F (0°C to 40°C)	32°F to 104°F (0°C to 40°C)	32°F to 104°F (0°C to 40°C)	32°F to 104°F (0°C to 40°C)
<b>Humidity</b>	5% to 95%	5% to 95%	5% to 95%	5% to 95%

<sup>1</sup> Requires separate cellular modem

<sup>2</sup> Interface configurable for WAN or LAN use



## Rack mount models

	<b>MX84</b> 	<b>MX100</b> 	<b>MX250</b> 	<b>MX400</b> 	<b>MX450</b> 	<b>MX600</b> 
<b>Recommended use cases</b>	Medium branch	Large branch	Campus or VPN concentrator	Campus or VPN concentrator	Campus or VPN concentrator	Campus or VPN concentrator
<b>Recommended clients</b>	200	500	2,000	2,000	10,000	10,000
<b>Stateful Firewall Throughput</b>	500 Mbps	750 Mbps	4 Gbps	1 Gbps	6 Gbps	1 Gbps
<b>Advanced Security Throughput</b>	320 Mbps	650 Mbps	2 Gbps	1 Gbps	4 Gbps	1 Gbps
<b>Maximum VPN Throughput</b>	250 Mbps	500 Mbps	1 Gbps	1 Gbps	2 Gbps	1 Gbps
<b>Maximum concurrent VPN tunnels</b>	100	250	1,000	1,000	5,000	5,000
<b>WAN Interfaces</b>						
<b>Dedicated</b>	2 x GbE RJ45 1 x USB (cellular failover <sup>1</sup> )	1 x GbE RJ45 1 x USB (cellular failover <sup>1</sup> )	2 x 10GbE SFP+ 1 x USB (cellular failover <sup>1</sup> )	2 x 1GbE RJ45 2 x USB (cellular failover <sup>1</sup> )	2 x 10GbE SFP+ 1 x USB (cellular failover <sup>1</sup> )	2 x 1GbE RJ45 2 x USB (cellular failover <sup>1</sup> )
<b>Dual-purpose<sup>2</sup></b>	-	1 x GbE RJ45	-	-	-	-
<b>LAN Interfaces</b>						
<b>Fixed</b>	8 x GbE 2 x GbE (SFP)	8 x GbE 2 x GbE (SFP)	8 x GbE (RJ45) 8 x GbE (SFP) 8 x 10GbE (SFP+)	2 x GbE (LAN bypass)	8 x GbE (RJ45) 8 x GbE (SFP) 8 x 10GbE (SFP+)	2 x GbE (LAN bypass)
<b>Modular</b> (optional, max. of 2)	-	-	-	8 x GbE (RJ45) 8 x GbE (SFP) 2 x 10GbE (SFP+)	-	8 x GbE (RJ45) 8 x GbE (SFP) 2 x 10GbE (SFP+)
<b>Web Caching</b>	1TB	1TB	128GB (SSD)	1TB	128GB (SSD)	4 x 1 TB (RAID)
<b>Mounting</b>	1U rack	1U rack	1U rack	1U rack	1U rack	2U rack
<b>Dimensions</b> (w x d x h)	19" x 10 " x 1.75" (483 mm x 254 mm x 44 mm)	19" x 10 " x 1.75" (483 mm x 254 mm x 44 mm)	19" x 17.3 " x 1.75" (483 mm x 440 mm x 44 mm)	19" x 22" x 1.75" (483 mm x 559 mm x 44 mm)	19" x 17.3 " x 1.75" (483 mm x 440 mm x 44 mm)	19" x 22 " x 3.5" (483 mm x 559 mm x 89 mm)
<b>Weight</b>	9 lb (4.1kg)	9 lb (4.1kg)	16 lb (7.3kg)	33 lb (15.0 kg)	16 lb (7.3kg)	53 lb (24.0 kg)
<b>Power Supply</b>	Internal, 100-220V 50/60Hz AC	Internal 100-220V 50/60Hz AC	Modular 110-220V 50/60Hz AC 2 x 250WAC PSU	Internal 100-220V 50/60Hz AC	Modular 110-220V 50/60Hz AC 2 x 250WAC PSU	Internal 100-220V 50/60Hz AC
<b>Power Load</b> (idle/max)	26W / 32W	30W / 55W	105W / 190W	123W / 215W	105W / 190W	132W / 226W
<b>Operating Temperature</b>	32°F to 104°F (0°C to 40°C)	32°F to 104°F (0°C to 40°C)	32°F to 104°F (0°C to 40°C)	32°F to 104°F (0°C to 40°C)	32°F to 104°F (0°C to 40°C)	32°F to 104°F (0°C to 40°C)
<b>Humidity</b>	5% to 95%	5% to 95%	5% to 95%	5% to 95%	5% to 95%	5% to 95%

<sup>1</sup> Requires separate cellular modem

<sup>2</sup> Interface configurable for WAN or LAN use

## Virtual Appliances

### vMX100



<b>Recommended use cases</b>	Extend Auto-VPN and SD-WAN to public cloud services
<b>Supported Platforms</b>	Amazon Web Services (AWS)
<b>Interfaces</b>	1 + Virtual
<b>VPN Throughput</b>	500 Mbps
<b>Web Caching</b>	Not applicable

## Included In the Box

Package Contents	Platform(s)
Mounting kit	All
Cat 5 Ethernet cable (2)	All
AC Power Adapter	MX64, MX64W, MX65, MX65W
Wireless external omni antenna (2)	MX64W, MX65W
250W Power Supply (2)	MX250, MX450
400W Power Supply (2)	MX400, MX600
System Fan (2)	MX250, MX450
Mounting rails	MX400, MX600

## Lifetime Warranty with Next-day Advanced Replacement

Cisco Meraki MX appliances include a limited lifetime hardware warranty that provides next-day advance hardware replacement. Cisco Meraki's simplified software and support licensing model also combines all software upgrades, centralized systems management, and phone support under a single, easy-to-understand model. For complete details, please visit [meraki.cisco.com/support](https://meraki.cisco.com/support).



## Accessories

The Cisco Meraki MX84, MX100, MX250, MX450, MX400, and MX600 models support pluggable optics for high-speed backbone connections between wiring closets or to aggregation switches. Cisco Meraki offers several standards-based Gigabit and 10 Gigabit pluggable modules. Each appliance has also been tested for compatibility with several third-party modules.



Interface Modules for MX400, MX600



Pluggable (SFP) Optics for MX84, MX100, MX250, MX450, MX400, and MX600

### ACCESSORIES / SFP TRANSCEIVERS

Supported Cisco Meraki accessory modules.

MODEL	DESCRIPTION
IM-8-CU-1GB	Cisco Meraki 8 x 1 GbE Copper Interface Module for MX400, MX600
IM-8-SFP-1GB	Cisco Meraki 8 x 1 GbE SFP Interface Module for MX400, MX600
IM-2-SFP-10GB	Cisco Meraki 2 x 10 GbE SFP+ Interface Module for MX400, MX600
MA-SFP-1GB-SX	Cisco Meraki 1 GbE SFP SX Fiber Module (1000BASE-SX, range: 550m) for MX84, MX100, MX250, MX450, MX400, MX600
MA-SFP-1GB-TX	Cisco Meraki 1 GbE RJ45 Copper Module (1000BASE-T for twisted pair) for MX84, MX100, MX250, MX450, MX400, MX600
MA-SFP-10GB-SR	Cisco Meraki 10 GbE Short Range SFP+ Module (10GBASE-SR, range: 400m) for MX250, MX450, MX400, MX600
MA-CBL-TA-1M	Cisco Meraki 10 GbE Twinax Cable with SFP+ Connectors (10GSFP+Cu, range: 1m) for MX250, MX450, MX400, MX600
MA-CBL-TA-3M	Cisco Meraki 10 GbE Twinax Cable with SFP+ Connectors (10GSFP+Cu, range: 3m) for MX250, MX450, MX400, MX600
MA-PWR-30WAC	Meraki MX64 Replacement Power Adapter (30 WAC)
MA-PWR-90WAC	Meraki MX65 Replacement Power Adapter (90 WAC)
MA-PWR-250WAC	Meraki MX250/MX450 Power Supply Unit (PSU)
MA-FAN-18K	Meraki 18K RPM system fan for MX250 and MX450
MA-ANT-MX	One pair of external dual-band dipole antennas (connector type: RP-SMA) for MX64W or MX65W

Note: Please refer to meraki.com for additional single-mode and multi-mode fiber transceiver modules

### POWER CABLES

1 x power cable required for each MX, 2x power cables required for MX250, MX450, MX400, MX600. For US customers, all required power cables will be automatically included. Customers outside the US are required to order power cords separately.

#### SKU

MA-PWR-CORD-US

MA-PWR-CORD-EU

MA-PWR-CORD-UK

MA-PWR-CORD-AU



# Specifications

## Management

Managed via the web using the Cisco Meraki dashboard

Single pane-of-glass into managing wired and wireless networks

Zero-touch remote deployment (no staging needed)

Automatic firmware upgrades and security patches

Templates based multi-network management

Org-level two-factor authentication and single sign-on

Role based administration with change logging and alerts

## Monitoring and Reporting

Throughput, connectivity monitoring and email alerts

Detailed historical per-port and per-client usage statistics

Application usage statistics

Org-level change logs for compliance and change management

VPN tunnel and latency monitoring

Network asset discovery and user identification

Periodic emails with key utilization metrics

Device performance and utilization reporting

Netflow support

Syslog integration

## Remote Diagnostics

Live remote packet capture

Real-time diagnostic and troubleshooting tools

Aggregated event logs with instant search

## Network and Firewall Services

Stateful firewall, 1:1 NAT, DMZ

Identity-based policies

Auto VPN: Automated site-to-site (IPsec) VPN, for hub-and-spoke or mesh topologies

Client (IPsec L2TP) VPN

Multiple WAN IP, PPPoE, NAT

VLAN support and DHCP services

Static routing

User and device quarantine

## WAN Performance Management

Web caching (not available on the MX64/MX64W and MX65/MX65W)

WAN link aggregation

Automatic Layer 3 failover (including VPN connections)

3G / 4G USB modem failover

Application level (Layer 7) traffic analysis and shaping

Ability to choose WAN uplink based on traffic type

SD-WAN: Dual active VPN with policy based routing and dynamic path selection

## Advanced Security Services

Content filtering (Webroot BrightCloud CIPA compliant URL database)

Web search filtering (including Google / Bing SafeSearch)

YouTube for Schools

Intrusion-prevention sensor (Sourcefire SNORT® based)

Advanced Malware Protection (AMP)

Geography based firewall rules (MaxMind Geo-IP database)

Note: Advanced security services require Advanced Security license

## Integrated Wireless (MX64W and MX65W only)

1 x 802.11a/n/ac (5 GHz) radio

1 x 802.11b/g/n (2.4 GHz) radio

Max data rate 1.2 Gbit/s (aggregate)

2 x 2 MIMO with two spatial streams

2 external dual-band dipole antennas (connector type: RP-SMA)

Antenna gain: 3.0 dBi @ 2.4 GHz, 3.5 dBi @ 5 GHz

WEP, WPA, WPA2-PSK, WPA2-Enterprise with 802.1X authentication

FCC (US): 2.412-2.462 GHz, 5.150-5.250 GHz (UNII-1), 5.250-5.350 GHz (UNII-2), 5.470-5.725 GHz (UNII-2e), 5.725 -5.825 GHz (UNII-3)

CE (Europe): 2.412-2.484 GHz, 5.150-5.250 GHz (UNII-1), 5.250-5.350 GHz (UNII-2) 5.470-5.600 GHz, 5.660-5.725 GHz (UNII-2e)

Additional regulatory information: IC (Canada), C-Tick (Australia/New Zealand), RoHS

## Power over Ethernet (MX65 and MX65W only)

2 x PoE+ (802.3at) LAN ports

30W maximum per port

## Regulatory

FCC (US)

CB (IEC)

CISPR (Australia/New Zealand)

## Warranty

Full lifetime hardware warranty with next-day advanced replacement included.

## Ordering Guide

To place an order for an MX appliance, pair a specific hardware model with a single license (which includes cloud services, software upgrades and support). For example, to order an MX64 with 3 years of Advanced Security license, order an MX64-HW with LIC-MX64-SEC-3YR. Lifetime warranty with advanced replacement is included on all hardware at no additional cost.

MODEL	LICENSE	DESCRIPTION
MX64-HW	LIC-MX64-ENT-1YR LIC-MX64-ENT-3YR LIC-MX64-ENT-5YR LIC-MX64-SEC-1YR LIC-MX64-SEC-3YR LIC-MX64-SEC-5YR	Cisco Meraki MX64, 1 year Enterprise License and Support Cisco Meraki MX64, 3 year Enterprise License and Support Cisco Meraki MX64, 5 year Enterprise License and Support Cisco Meraki MX64, 1 year Advanced Security License and Support Cisco Meraki MX64, 3 year Advanced Security License and Support Cisco Meraki MX64, 5 year Advanced Security License and Support
MX64W-HW	LIC-MX64W-ENT-1YR LIC-MX64W-ENT-3YR LIC-MX64W-ENT-5YR LIC-MX64W-SEC-1YR LIC-MX64W-SEC-3YR LIC-MX64W-SEC-5YR	Cisco Meraki MX64W, 1 year Enterprise License and Support Cisco Meraki MX64W, 3 year Enterprise License and Support Cisco Meraki MX64W, 5 year Enterprise License and Support Cisco Meraki MX64W, 1 year Advanced Security License and Support Cisco Meraki MX64W, 3 year Advanced Security License and Support Cisco Meraki MX64W, 5 year Advanced Security License and Support
MX65-HW	LIC-MX65-ENT-1YR LIC-MX65-ENT-3YR LIC-MX65-ENT-5YR LIC-MX65-SEC-1YR LIC-MX65-SEC-3YR LIC-MX65-SEC-5YR	Cisco Meraki MX65, 1 year Enterprise License and Support Cisco Meraki MX65, 3 year Enterprise License and Support Cisco Meraki MX65, 5 year Enterprise License and Support Cisco Meraki MX65, 1 year Advanced Security License and Support Cisco Meraki MX65, 3 year Advanced Security License and Support Cisco Meraki MX65, 5 year Advanced Security License and Support
MX65W-HW	LIC-MX65W-ENT-1YR LIC-MX65W-ENT-3YR LIC-MX65W-ENT-5YR LIC-MX65W-SEC-1YR LIC-MX65W-SEC-3YR LIC-MX65W-SEC-5YR	Cisco Meraki MX65W, 1 year Enterprise License and Support Cisco Meraki MX65W, 3 year Enterprise License and Support Cisco Meraki MX65W, 5 year Enterprise License and Support Cisco Meraki MX65W, 1 year Advanced Security License and Support Cisco Meraki MX65W, 3 year Advanced Security License and Support Cisco Meraki MX65W, 5 year Advanced Security License and Support
MX84-HW	LIC-MX84-ENT-1YR LIC-MX84-ENT-3YR LIC-MX84-ENT-5YR LIC-MX84-SEC-1YR LIC-MX84-SEC-3YR LIC-MX84-SEC-5YR	Cisco Meraki MX84, 1 year Enterprise License and Support Cisco Meraki MX84, 3 year Enterprise License and Support Cisco Meraki MX84, 5 year Enterprise License and Support Cisco Meraki MX84, 1 year Advanced Security License and Support Cisco Meraki MX84, 3 year Advanced Security License and Support Cisco Meraki MX84, 5 year Advanced Security License and Support
MX100-HW	LIC-MX100-ENT-1YR LIC-MX100-ENT-3YR LIC-MX100-ENT-5YR LIC-MX100-SEC-1YR LIC-MX100-SEC-3YR LIC-MX100-SEC-5YR	Cisco Meraki MX100, 1 year Enterprise License and Support Cisco Meraki MX100, 3 year Enterprise License and Support Cisco Meraki MX100, 5 year Enterprise License and Support Cisco Meraki MX100, 1 year Advanced Security License and Support Cisco Meraki MX100, 3 year Advanced Security License and Support Cisco Meraki MX100, 5 year Advanced Security License and Support
vMX100	LIC-VMX100-1YR LIC-VMX100-3YR LIC-VMX100-5YR	Cisco Meraki vMX100, 1 year License and Support Cisco Meraki vMX100, 3 year License and Support Cisco Meraki vMX100, 5 year License and Support

\*Note: For each MX product, additional 7 or 10 year Enterprise or Advanced Security licensing options are also available (ex: LIC-MX100-SEC-7YR).

## Ordering Guide

To place an order for an MX appliance, pair a specific hardware model with a single license (which includes cloud services, software upgrades and support). For example, to order an MX64 with 3 years of Advanced Security license, order an MX64-HW with LIC-MX64-SEC-3YR. Lifetime warranty with advanced replacement is included on all hardware at no additional cost.

MODEL	LICENSE	DESCRIPTION
MX250-HW	LIC-MX250-ENT-1YR LIC-MX250-ENT-3YR LIC-MX250-ENT-5YR LIC-MX250-SEC-1YR LIC-MX250-SEC-3YR LIC-MX250-SEC-5YR	Cisco Meraki MX250, 1 year Enterprise License and Support Cisco Meraki MX250, 3 year Enterprise License and Support Cisco Meraki MX250, 5 year Enterprise License and Support Cisco Meraki MX250, 1 year Advanced Security License and Support Cisco Meraki MX250, 3 year Advanced Security License and Support Cisco Meraki MX250, 5 year Advanced Security License and Support
MX400-HW	LIC-MX400-ENT-1YR LIC-MX400-ENT-3YR LIC-MX400-ENT-5YR LIC-MX400-SEC-1YR LIC-MX400-SEC-3YR LIC-MX400-SEC-5YR	Cisco Meraki MX400, 1 year Enterprise License and Support Cisco Meraki MX400, 3 year Enterprise License and Support Cisco Meraki MX400, 5 year Enterprise License and Support Cisco Meraki MX400, 1 year Advanced Security License and Support Cisco Meraki MX400, 3 year Advanced Security License and Support Cisco Meraki MX400, 5 year Advanced Security License and Support
MX450-HW	LIC-MX450-ENT-1YR LIC-MX450-ENT-3YR LIC-MX450-ENT-5YR LIC-MX450-SEC-1YR LIC-MX450-SEC-3YR LIC-MX450-SEC-5YR	Cisco Meraki MX450, 1 year Enterprise License and Support Cisco Meraki MX450, 3 year Enterprise License and Support Cisco Meraki MX450, 5 year Enterprise License and Support Cisco Meraki MX450, 1 year Advanced Security License and Support Cisco Meraki MX450, 3 year Advanced Security License and Support Cisco Meraki MX450, 5 year Advanced Security License and Support
MX600-HW	LIC-MX600-ENT-1YR LIC-MX600-ENT-3YR LIC-MX600-ENT-5YR LIC-MX600-SEC-1YR LIC-MX600-SEC-3YR LIC-MX600-SEC-5YR	Cisco Meraki MX600, 1 year Enterprise License and Support Cisco Meraki MX600, 3 year Enterprise License and Support Cisco Meraki MX600, 5 year Enterprise License and Support Cisco Meraki MX600, 1 year Advanced Security License and Support Cisco Meraki MX600, 3 year Advanced Security License and Support Cisco Meraki MX600, 5 year Advanced Security License and Support

\*Note: For each MX product, additional 7 or 10 year Enterprise or Advanced Security licensing options are also available (ex: LIC-MX100-SEC-7YR).