



NW811

AX1800 Dual Band WiFi 6 USB Adapter  
with 2x 5dBi Antennas

Quick Installation Guide

*Simplify Your Life*

www.simplecom.com.au

## Features

NW811 is a new generation WiFi 6 USB adapter plugs right into your PC or laptop to give you fast and efficient WiFi 6 connection. It provides AX1800 speed supports up to 574Mbps at 2.4GHz and 1201Mbps at 5GHz.

With WiFi 6 support, it enables more advanced features, such as OFDMA and MU-MIMO technologies, that improves wireless network performance by establishing simultaneous transmissions to and from multiple clients. Those new features provide highly efficient WiFi connections and ensure all WiFi devices are reliably connected to your network. It also supports the latest WPA3 WiFi security that helps to protect your network, provides enhanced security and protections for enterprises and home users.

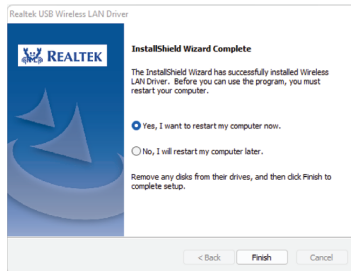
## Specifications

- Model: NW811
- Interface: USB 3.2 Gen 1 (USB 3.0)
- WiFi Protocol: IEEE 802.11a/b/g, WiFi 4 (802.11n), WiFi 5 (802.11ac), WiFi 6 (802.11ax)
- WiFi Rate: up to 574Mbps (2.4GHz 802.11ax), 1201Mbps (5GHz 802.11ax), 867Mbps (5GHz 802.11ac)
- Antenna Type: 2x 5dBi adjustable high gain antennas
- Wireless Encryption: WPA2, WPA3
- Wireless Frequency: Dual band 2.4GHz & 5GHz
- Operating Temperature: 0 – 40°C
- Operating Humidity: 10% - 90% non-condensing
- System Requirements: Windows 10 and above

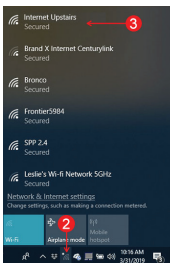
## Installation (Windows)

1. Open the driver installation program from the AutoRun Menu or double click "Setup.exe" under "Windows" folder, restart computer if required after installation

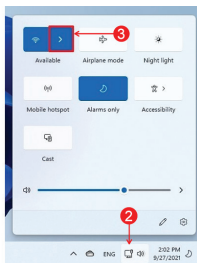
**Note:** You can download driver from our website if you don't have CD-ROM on your PC, you can find driver under DOWNLOAD tab from product page at [www.simplecom.com.au](http://www.simplecom.com.au)



2. Click the network icon in system tray
3. Select your Wi-Fi SSID you want to connect

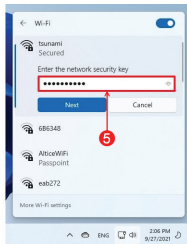
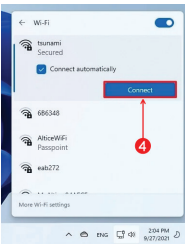


Windows 10



Windows 11

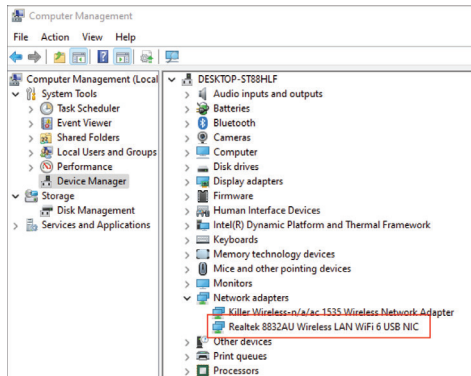
4. Check the "Connect automatically" option and click the "Connect"
5. Enter the network security key (password), then click "Next"



Once you complete the steps, the PC will connect to the network using the wireless connection.

## Windows Device Manager

1. To open Device Manager on Windows 10 or 11, in the search box on the taskbar, type Device Manager, then select from the menu.
2. Expand the "Network adapters" section. On a successful install, you should see the following device in the list with no exclamation points or question marks.
3. You can right click the adapter on Device Manager to manually update or uninstall driver.



## Warranty

1 Year limited Warranty. Our goods come with guarantees that cannot be excluded under the Australian Consumer Law. You are entitled to a replacement or refund for a major failure and for compensation for any other reasonably foreseeable loss or damage. You are also entitled to have the goods repaired or replaced if the goods fail to be of acceptable quality and the failure does not amount to a major failure.

For our assistance with regards to warranty please email to [support@simplecom.com.au](mailto:support@simplecom.com.au) or create a support ticket at <http://www.simplecom.com.au>

© Simplecom Australia All Rights Reserved. Simplecom is a registered trademark of Simplecom Australia Pty Ltd. All other trademarks are property of their respective owner. Specifications and external appearance are subject to change without notice. Warranty and technical support covering this product are only valid in the country or region of purchase.