

# Quick Start Guide

Pan/Tilt Home Security  
Wi-Fi Camera

## STEP 1

### DOWNLOAD APP

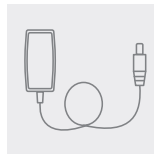
Get the **Tapo** app from the App Store or Google Play.



## STEP 2

### POWER UP

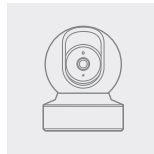
Plug in the adapter to power up your camera.



## STEP 3

### SET UP

Tap the **+** button in the app and select your model. Follow app instructions to complete setup.



## LED Indication

<b>Solid red</b>	Starting up
<b>Blinking red and green</b> (for Wi-Fi setup)	Ready for setup
<b>Blinking red slowly</b> (for Wi-Fi setup)	Connecting to Wi-Fi
<b>Solid amber</b>	Connected to Wi-Fi or wired network
<b>Solid green</b>	Connected to the cloud
<b>Blinking red quickly</b>	Camera resetting
<b>Blinking green quickly</b>	Camera updating

## Mounting Kit



Camera Base



Camera



Mounting Template



Screws



Anchors (for wall mounting)



### Setup Video

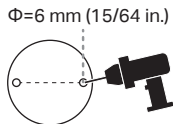
Scan QR code or visit  
<https://www.tp-link.com/support/setup-video/#cloud-cameras>



## Mounting Instructions

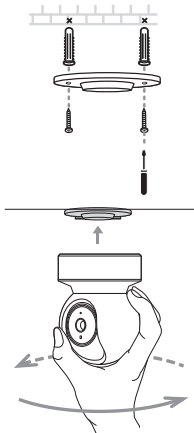
### 1. Mark Position

Place the mounting template where you want the camera. For wall mounting, drill two holes through two circles.



### 2. Mount Base

Affix the camera base using the screws. For wall mounting, insert two anchors into the holes and use the screws to affix the camera base over the anchors.



### 3. Secure Camera

Attach the camera on the base and rotate to secure the camera.

## Appearance

Tilt the camera lens up to find the RESET button and the microSD card slot.

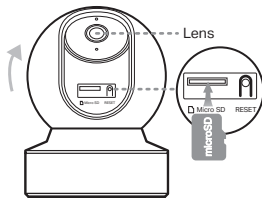
### RESET Button

While the camera is powered on, press and hold the RESET button to reset the camera.

- Press and hold for 5 seconds: Reset Wi-Fi settings only
- Press and hold for 10 seconds: Reset to factory settings

### microSD Card Slot

Insert a microSD card and initialize it on the Tapo app for local recording.



For technical support, the user guide, and more information, please visit [www.tapo.com/support/](http://www.tapo.com/support/)



- Keep the device away from water, fire, humidity or hot environments.
  - Do not use damaged charger or USB cable to charge the device.
  - Do not use any other chargers than those recommended.
  - Do not use the device where wireless devices are not allowed.
  - Adapter shall be installed near the equipment and shall be easily accessible.
  - Use only power supplies which are provided by manufacturer and in the original packing of this product. If you have any questions, please don't hesitate to contact us.
  - For indoor use only.
  - Do not disassemble, repair or modify the product.
  - Do not use the product if the casing has been broken. Danger of electric shock.
  - Never touch the product with wet hands.
  - Do not expose to heavy rain or any type of moisture.
  - Do not place near automatically controlled devices such as fire alarms. Radio waves emitted from this product may cause such devices to malfunction resulting in an accident.
  - Observe restrictions on using wireless products in fuel depots, chemical plants or when blasting operations are in progress.
  - Do not use liquid to clean the product. Only use a dry cloth.
  - Never put metal objects inside the product. If a metal object enters the product turn off the circuit breaker and contact an authorised electrician.
  - This product is not intended to be used when providing medical care. Consult the manufacturer of any personal medical devices, such as pacemakers or hearing aids to determine if they are adequately shielded from external RF (radio frequency) energy.
  - Do not use this product in health care facilities. Hospitals or health care facilities may be using equipment that could be sensitive to external RF energy.
  - Do not use this product near water for example near a bath tub, wash bowl, kitchen sink or laundry tub, in a wet basement or near a swimming pool.
  - The product should be kept free from excessive smoke, dust or high temperature and vibration.
  - This product should not be exposed to direct sunlight
  - Do not place heavy objects on top of the product.
  - When you leave the product unused for a long time unplug the product from the power outlet.
  - This product may interfere with other electronic products such as TV, radios, personal computers, phones or other wireless devices.
  - Operating Temperature: 0 °C ~ 40°C (32°F ~ 104°F)
- Please read and follow the above safety information when operating the device. We cannot guarantee that no accidents or damage will occur due to improper use of the device. Please use this product with care and operate at your own risk.

TP-Link hereby declares that the device is in compliance with the essential requirements and other relevant provisions of directives 2014/53/EU, 2009/125/EC, 2011/65/EU and (EU) 2015/863. The original EU declaration of conformity may be found at <https://www.tapo.com/en/support/ce/>  
TP-Link hereby declares that the device is in compliance with the essential requirements and other relevant provisions of the Radio Equipment Regulations 2017.  
The original UK declaration of conformity may be found at <https://www.tapo.com/support/ukca/>

©2023 TP-Link

